

*2nd Meeting of the European Smart Villages Pilot Observatory  
NOVEMBER 27–28, 2023 – PRAGUE*

**RETERURALE  
NAZIONALE  
20142020**

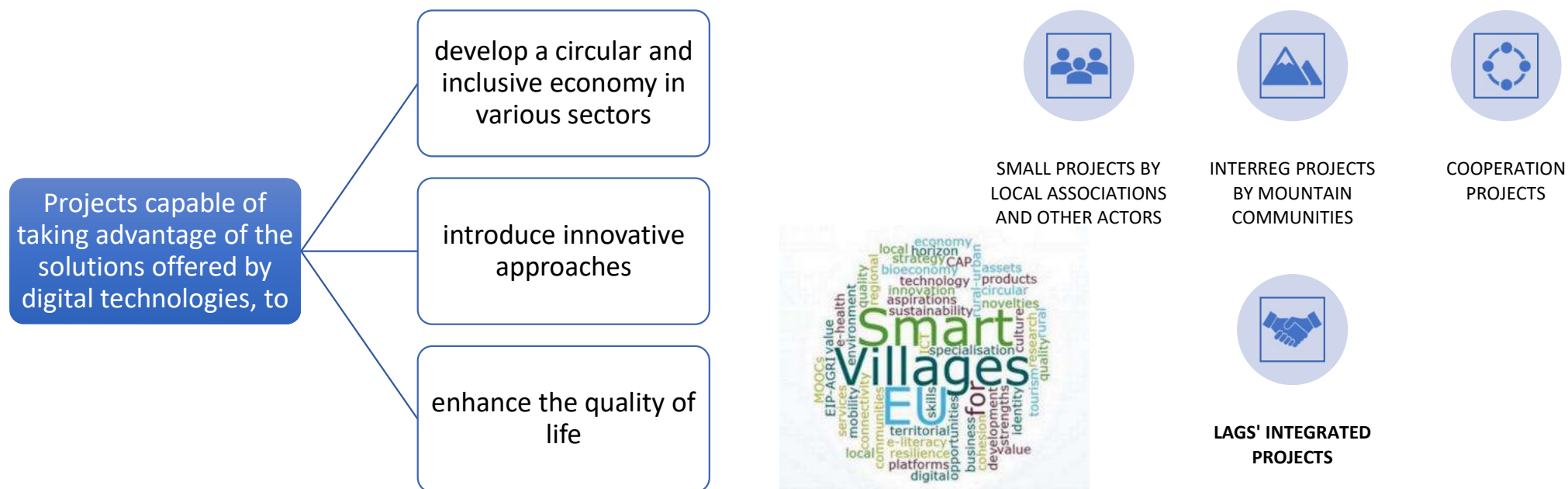
## **Italian approach to support Smart Villages through the CAP and other policies**



*Filippo Chiozzotto – Emilia Reda*

*CREA – PB, National Rural Network, Italy*

# Smart Villages in Italy before the CAP Strategic Plan



## Community regeneration projects – Leader specific action in Tuscany

- Born to counter the effects of COVID-19 emergency on rural areas
- Expanded in public-private cooperation actions at local level to support the development of ecosystem services, circular economy initiatives and bioeconomy (7 cooperation themes)
- The local community submits a project idea
- The LAG guides the partnership in drafting and implementing the actual project

RETERURALE  
NAZIONALE  
20142020

MINISTERO DELL'AGRICOLTURA  
DELLA SOVRANITÀ ALIMENTARE  
E DELLE FORESTE

Finanziato  
dall'Unione europea

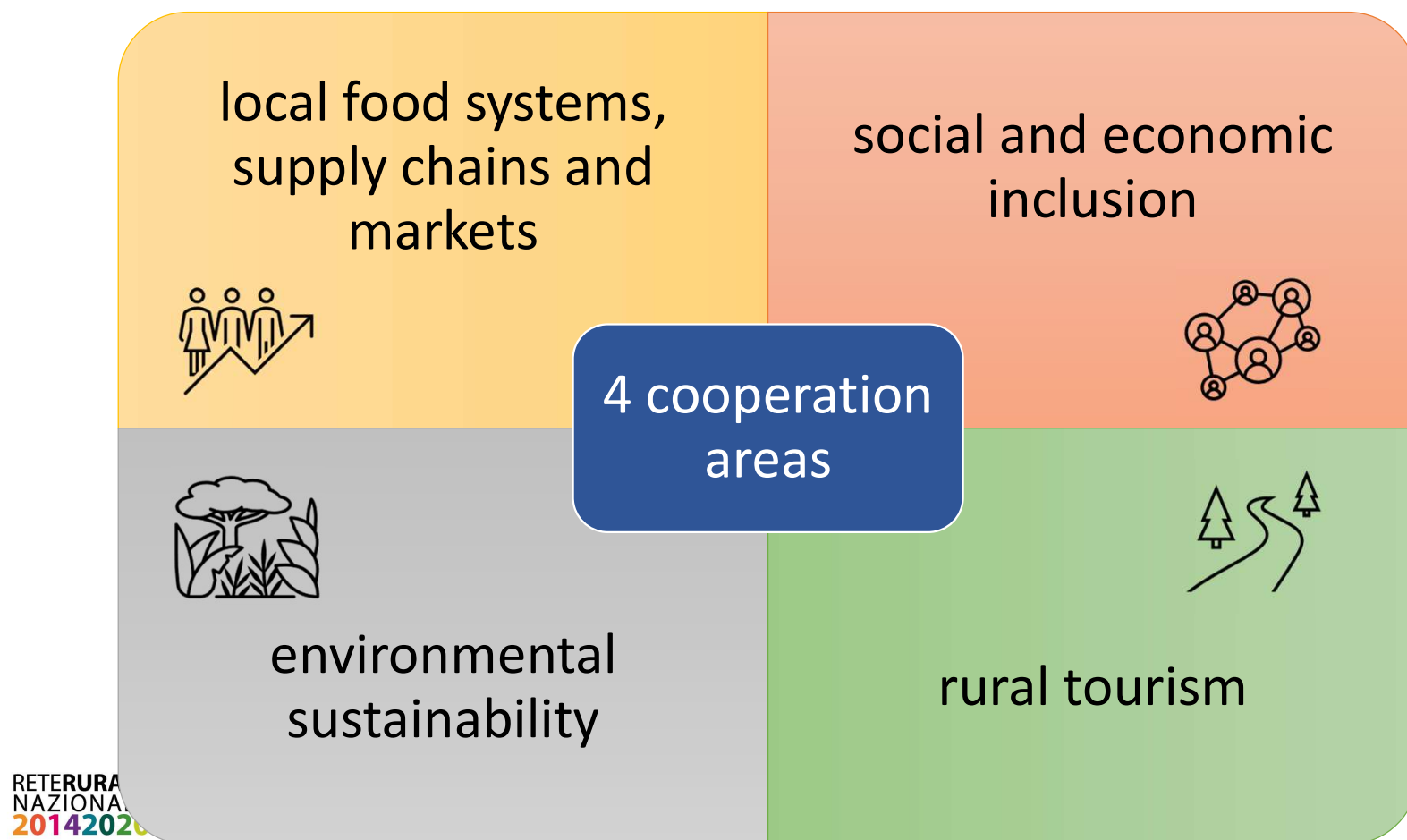
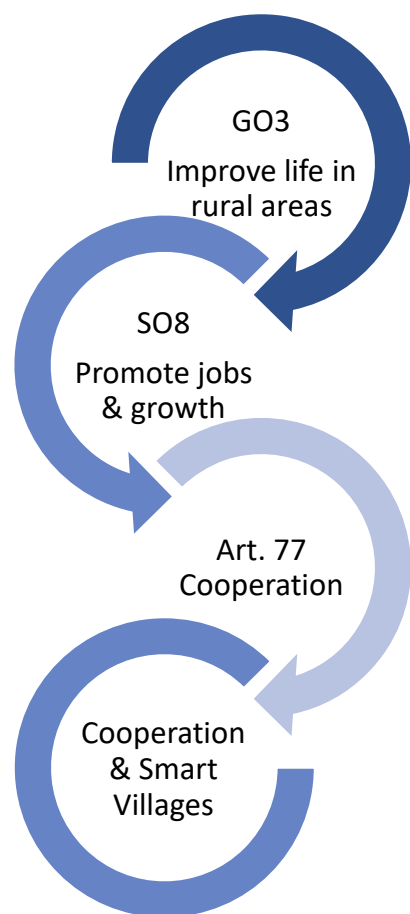
crea  
Consiglio per la ricerca in agricoltura  
e l'analisi dell'economia agraria

LEADER

# Smart Villages in the Italian CAP Strategic Plan 2023-2027

Smart Villages will be supported through a specific intervention under Article 77:

## SRG07 – Cooperation for Smart Villages and local rural development



# Smart Villages in the Italian CAP Strategic Plan 2023-2027

## Main objective

- Encouraging, in local communities (within a Municipality or an aggregation of Municipalities), the activation of integrated community initiatives and projects to strengthen the resilience and sustainability of rural areas

## Beneficiaries

- Newly established (or already established and with a recognized legal form) public and/or private partnerships which identify a lead partner

## Two possible forms of support

- **Global grant:** the intervention covers both the costs of cooperation and the costs of the operations implemented, which must comply with the rules and requirements of other RD interventions (Art. 70-78 of Reg. 2115/2021)
- The intervention **only covers cooperation costs** while, for the operations implemented, funds from other RD interventions or other national or EU support instruments are used

## Eligible costs

- feasibility studies, specific consultancy, drafting of plans
- running and administrative costs
- dissemination, promotional activities, monitoring

# Smart Villages in the Italian CAP Strategic Plan 2023-2027

Smart Village intervention will be activated by 10 Italian regions

- Approx. 64,5 M euros
- 323 «operations» (O.32)

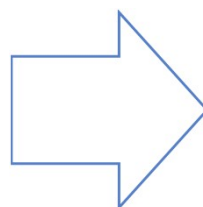


Regional MAs can adapt or limit cooperation themes/areas, eligible costs, beneficiaries, selection criteria, etc.



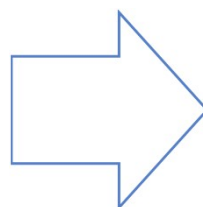
Smart Villages will be supported also through LEADER

- LAGs can provide for SV intervention in their LDSs, financing local partnerships, OR be themselves partners of Smart Village strategies financed at regional level



Not only Smart Villages strategies

The intervention also includes other forms of cooperation (former sub-measures 16.4, 16.5, 16.9)



most LAGs and LDSs have yet to be approved, so budget (and content) not available yet

# National Rural Network / CAP Network support for Smart Villages

Starting in 2021, The Italian National Rural Network (NRN) launched several activities to support the Smart Village approach and facilitate the implementation of Smart Village strategies within the CAP Strategic Plan

In early 2022, the LEADER working group of the NRN launched the [Smart Rural Hub](#), a **capacity building initiative**, in collaboration with the [Forum LEADER](#) (an Italian association of LAGs for exchange of experiences and debate on local development related topics)

- encouraging a common vision about Smart Villages
- preparing the ground to start implementing SV strategies in the coming years
- increasing the competence of LAGs and other local actors on this topic

- Workshops / webinars
- Study visits
- Collection of good practices / experiences
- Documents / guidelines



## GUIDA METODOLOGICA

SMART VILLAGE: STRUMENTI E METODOLOGIE PER  
LA COSTRUZIONE DI UNA STRATEGIA INTEGRATA

Ottobre 2022



LAGs are the main target of the initiative, but its outcomes will support all local actors who will engage in designing Smart Village strategies

RETERURALE  
NAZIONALE  
20142020





# A repertoire of good practices to draw inspiration from...

## Social and economic inclusion

### LAG Percorsi, Basilicata



Innovative services for monitoring the health conditions of vulnerable people

- Creating a network of telemedicine logistics points
- Identification of the structure best suited to the needs, if hospitalization necessary
- Remote patient management after hospitalization

RETERURALE  
NAZIONALE  
20142020



## Rural tourism

### Kalabria Trekking, social promotion Association



Digitalized services for the support and safety of hikers

- The path connects 10 ancient villages, which were off the tourist routes, and involves around 50 accommodation and catering facilities
- Memorandum of understanding with local authorities for the maintenance of the path
- Online check-in and check-out system to remotely accompany hikers on their journey
- Remote assistance with the possibility of intervening on site if necessary

# A repertoire of good practices to draw inspiration from...

## Local supply chains

LAG Start, Tuscany



Smart management of forest resources at local level

- Upload and combine data acquired from the ground or remotely on specific forest resources
- Automatically extract thematic maps and topographic data, to quantify ecosystem services and obtain decision support for field activities
- Web/app platform available to players in the forestry supply chain, public bodies, farms and forestry companies

## Environmental sustainability

Municipality of Campo Tures, Province of Bolzano



ComuneClima program certification

- Electric energy: Mix of photovoltaic, wind and hydroelectric systems
- Drinking water: 2,500 m<sup>3</sup> tank
- Heating: biogas plants owned by a cooperative of breeders and farmers + a local biomass plant, connected to the local district heating network
- Public management of the energy supply chain

RETERURALE  
NAZIONALE  
20142020





# Other policies supporting Smart Villages

## The National Strategy for Inner Areas (SNAI)

### What is an “Inner Area”?

- Not adequate offer of / access to basic services (schools, hospitals, railway stations...)
- Rich in natural assets and cultural resources
- Low population density
- risk of hydrogeological (or seismic) instability

60% of national territory, 23% of total population, 4,000+ municipalities

SNAI is an integrated plan with multi-level governance (national administrations – regions – municipalities – local supra-municipal entities) & multi-fund approach:

- 600 M euros of national resources, allocated to improving essential services
- fundings from ESI and other funds, used for local development projects

72 project areas selected

Synergies (& overlapping) with Leader/CLLD

<https://www.agenziacoesione.gov.it>



In 2023-2027 still unclear connection with EAFRD programming, given that the latter is outside the Partnership Agreement

# Other policies supporting Smart Villages

## National Recovery and Resilience Plan

The Italian plan provides for an intervention targeting rural and peripheral areas. The objective is to support projects developed by villages to boost their sustainable development, integrating cultural heritage protection objectives with the needs of social and economic revitalization.

### Two lines of intervention

1. 21 villages selected by the Italian Regions
  - Pilot projects related to economic and social revitalization
  - 420 M euros
2. 200+ project proposals by municipalities
  - 380 M euros
  - Additional support for local businesses

Selection procedure is ongoing

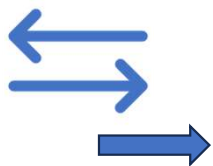
<https://cultura.gov.it/pnrr-borghi>



## Some final remarks



Smart village strategies as a way of supporting the development of essential services in rural and remote areas



Role of Leader: "multifunctional" LAGs, diversifying the support offered to the territory



Smart Village strategies (e.g. community projects) as a tool for involving new subjects, bearers of innovative ideas



Importance of digitalisation as a development tool and not as the final and sole objective of the Smart Village strategy



Measurement of results: R.40 and other indicators linked to the different areas of cooperation.

Difficulty in associating specific indicators, also given the need to ensure flexibility of the SV tool

Need for further discussion and in-depth analysis on the implementation of smart villages as a tool for territorial planning

Need to understand, within the Smart Village programming procedures, the functioning of the implementation system, the indicators and the results to be achieved

In the implementation phase, encourage territorial approaches to integrate the various local development policies



“

*Thank you*

”

*cooperazione.smartvillages@crea.gov.it*

RETERURALE  
NAZIONALE  
20142020



reterurale.it  
f t y i

