



SACHSEN-ANHALT

#moderndenken

The multi-funded CLLD approach of Saxony-Anhalt, Germany

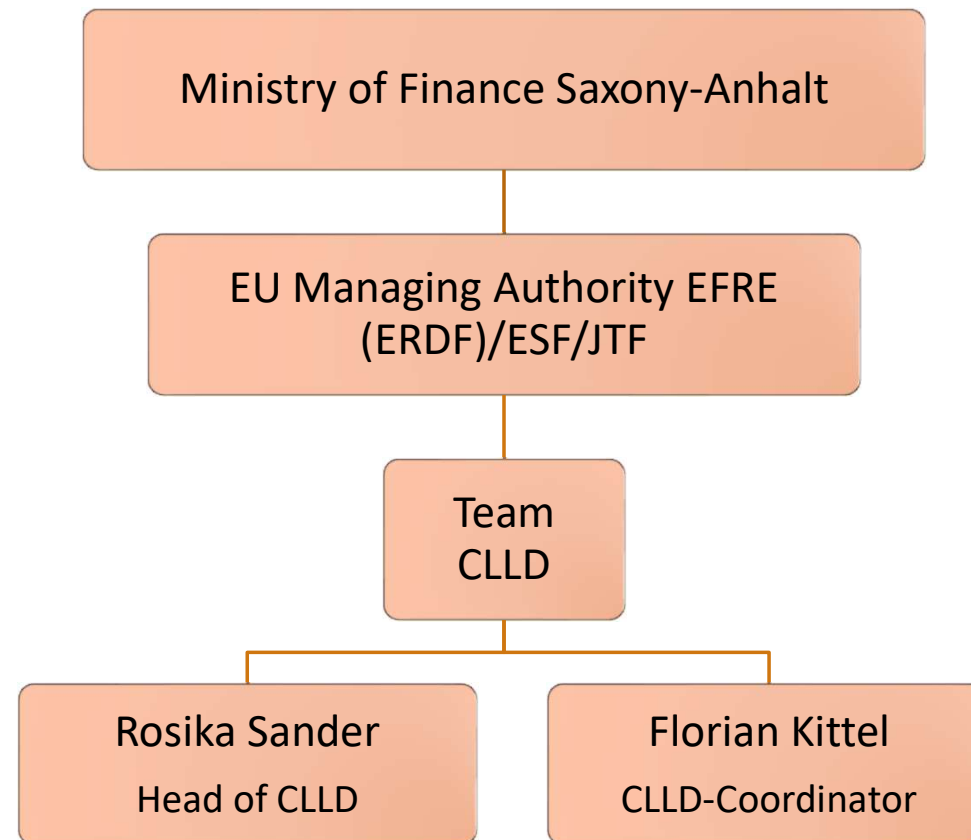
EXAMPLES OF SMART VILLAGES(-TYPE) SUPPORT THROUGH VARIOUS PROGRAMMES

2ND EUROPEAN SMART VILLAGES PILOT OBSERVATORY

27.11.2023



Who we are



History of CLLD in Saxony-Anhalt

Funding period 2014 - 2020

2014 - 2016

- multifunds permitted for the first time by the regulation
- No own guidelines, participation of CLLD in existing mainstream guidelines, but own money
- ESF: EU-VB has defined the topics

2018

- Evaluation CLLD
- Conclusions for programming next funding

2016 – 2020(23)

- **One LEADER/CLLD-Guideline for two funds:** ELER (= EAFRD) + ESF (Demography, labor market, networks, welcome cultures, Cooperation between schools and companies)
 - 7.6 Mio. € (156 projects)
- **Guideline Cultural heritage** (EFRE/ERDF) and **Guideline STARK III** (non-school) sports facilities
 - 27 Mio. € (63 projects)

History of CLLD in Saxony-Anhalt

Funding period 2021 - 2027

02/2020

- Cabinet decides: Rural development only via LEADER/CLLD

2021 – 2023

- Conception Guideline LAG-Management, CLLD ESF+ and CLLD EFRE/ERDF
- Coordination with various departments of the state government for topics and money

Since 2023

- **Guideline LAG-Management** (EFRE/ERDF) 25 Mio. €
- **Guideline ESF** (Demography, labor market, networks, welcoming cultures, 19 Mio. €)
- **Soon: Guideline CLLD EFRE** (Cultural heritage, remediation of contaminated sites and soil protection, sports facilities, climate protection, demographic change, tourism, small-scale economy)
 - 115 Mio. €)



Success. Your choice!

Obstacles

Success factors

What is that?

Introduction-Meetings with all involved stakeholders

Give stakeholders time to discover, network and develop

What should we do with it?

Name and show example projects

Visiting the projects
Example projects-meetings

Identify deficits

give support to set up projects



Success. Your choice!

Obstacles

Success factors

Why should we do that?

Attractive funding conditions

Name advantages

Give stakeholders the freedom to identify their own goals – use it!

This is impractical / bureaucratic

Listen honestly and openly to your stakeholders

Use the view of stakeholders

Implement committees for collaboration

Large LEADER/CLLD working group
LEADER/CLLD steering group
LAG-Meetings
Authority-Meetings

Implementing suggestions for improvement

CLLD. The instrument for rural participation in EU funds

Villages can only participate in EU funds with CLLD. This would not be possible with mainstream funding guidelines.

CLLD makes the EU directly visible and tangible in the villages.

Further contact

Ministry of Finance Saxony-Anhalt

EU Managing Authority EFRE (ERDF)/ESF/JTF

Florian Kittel

Olvenstedter Straße 4 (Haus 5)

39108 Magdeburg

Tel.: +49 391 567 1470

Fax: +49 391 567 1439

E-Mail: florian.kittel@sachsen-anhalt.de

www.europa.sachsen-anhalt.de

[Leader: LEADER und CLLD in Sachsen-Anhalt 2021-2027](#)



SACHSEN-ANHALT

#moderndenken